

3M Science.
Applied to Life.™

3M™ Glass Finishes

3M™ FASARA™ Glass Finishes

3M™ DI-NOC™ Glass Finishes

3M™ CRYSTAL Dusted and Frosted Glass Finishes

3M™ DICHROIC Glass Finishes

2020–2021

3M™ Glass Finishes

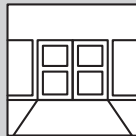
With over 100+ unique designs, patterns and textures, 3M™ Glass Finishes give you an easy way to add that extra element of design to your space.

At 3M we offer a variety of portfolios to choose from — each developed with a specific design need in mind, including: 3M™ FASARA™ Glass Finishes, 3M™ DI-NOC™ Glass Finishes, 3M™ CRYSTAL Dusted and Frosted Glass Finishes, and 3M™ DICHROIC Glass Finishes.

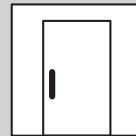
All glass finish films are ideal for privacy and decorative applications in offices, hotels, retail stores, restaurants, healthcare environments, and designed for ease of application and cleaning.

Apply to nearly any glass surface

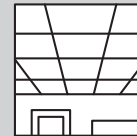
3M™ Glass Finishes can be easily applied to most new or existing glass surfaces. They require no extra hardware or setup — and no added maintenance or special cleaning. Also, as needs change, these decorative films can be quickly applied and removed.



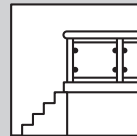
Entrances



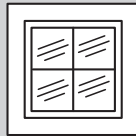
Doors



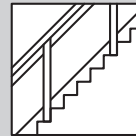
Ceilings



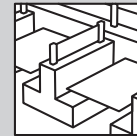
Balconies



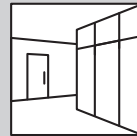
Windows



Staircases



Partitions



Corridors



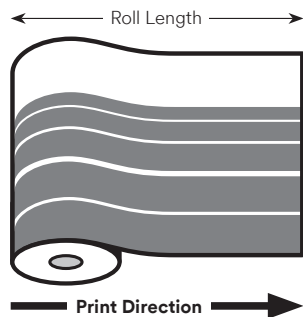
3M™ FASARA™ Glass Finishes

- ▶ Made from a durable polyester film with a pressure-sensitive adhesive backing
- ▶ Capture the look of custom etched, cut or sandblasted glass
- ▶ Choose from a variety of patterns — created in collaboration with leading designers from across the globe
- ▶ Tailor the light, privacy and style of your space
- ▶ Whiteboard WH-111G can turn any glass surface into a writable, erasable canvas

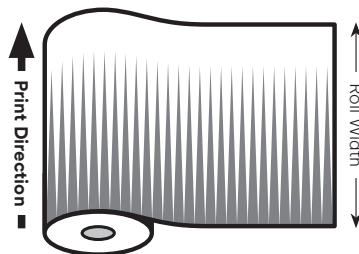


3M™ FASARA™ Print Direction

Print direction runs down the roll length of the film for most designs that are not Gradation, for Venetian Gradation, and for Illumina Silky-W and -S single panel sheets.



Print direction runs across the roll width of the film for most Gradations and Stripe/Border designs.



3M™ FASARA™ Gradation Transmission

100% Transmission
Clear Film
(Most Transparent)

Lower % Transmission
Pattern Area
(Least Transparent)



For Gradations, percent Transmission is an estimate of Visible Light Transmission for the most transparent and least transparent sections of the pattern. These values are typical but not warranted.

3M™ DI-NOC™ Glass Finishes

- ▶ NEW portfolio added to our glass finishes collection
- ▶ Provides durable glass surfaces with a dimensional appearance
- ▶ Apply under glass surfaces including walls, panels, table tops, shelves, fixtures and more
- ▶ Available in opaque designs such as abstract, stone, fabric, woodgrain and metallic



3M™ CRYSTAL Dusted and Frosted Glass Finishes

- ▶ Achieve the look of sandblasted or etched glass
- ▶ Create custom cut shapes to promote your brand and design
- ▶ Provide privacy in interior or exterior spaces while keeping an open feel



3M™ DICHROIC Glass Finishes

- ▶ Create dynamic, color-shifting appearance in cool or warm tones influenced by the environment
- ▶ Apply film on exterior or interior glass surfaces
- ▶ Transparent dichroic color effect changes color when viewed from different angles



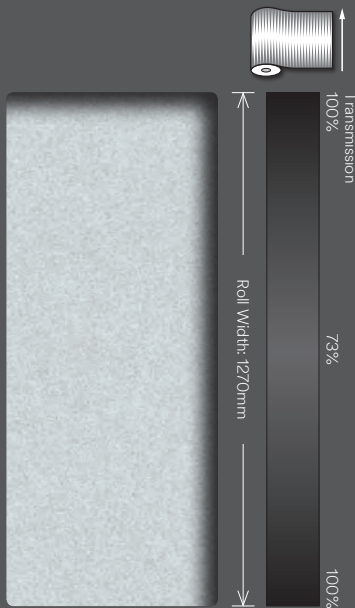


Cloud Narrow Light Gray SH2FGCNL

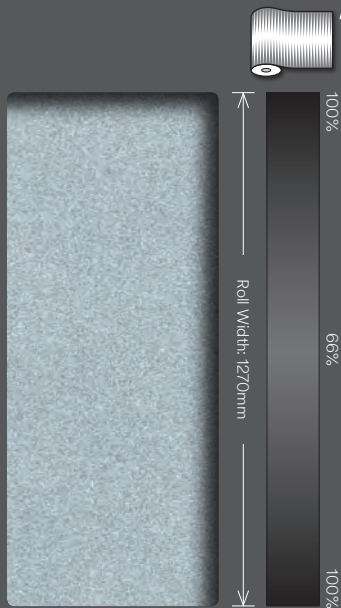
NEW DESIGNS

Our global design team has leveraged the latest trends from regions and markets around the world to deliver the best results for your projects.

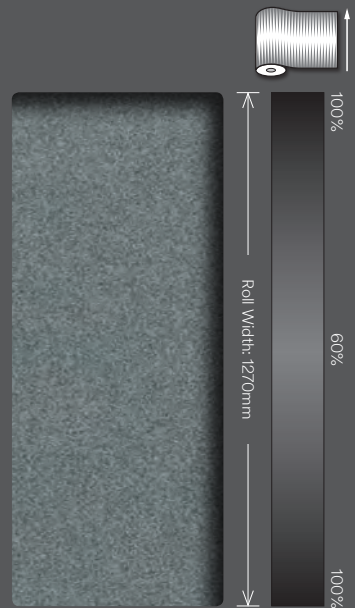
Gradation



Cloud Narrow Light Gray
SH2FGCNL

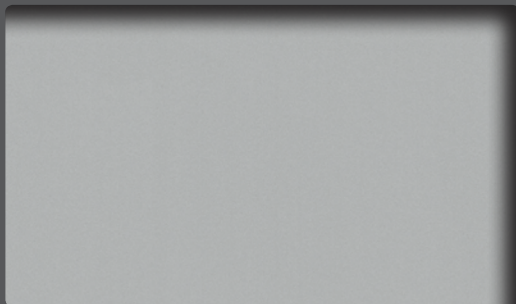


Cloud Narrow Blue Gray
SH2FGCNB

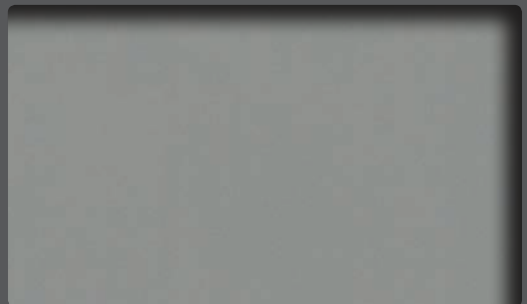


Cloud Narrow Dark Gray
SH2FGCND

Frost/Matte



Milky Milky Light Gray
SH2MAMML



Milky Milky Dark Gray
SH2MAMMD



Milky Milky Blue Gray
SH2MAMMB

Emboss



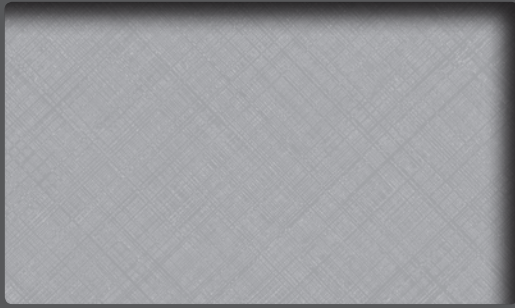
Cross Hairline Matte SH2CHMA

New Designs

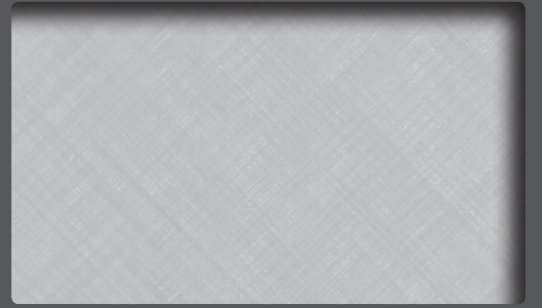
Emboss

← Roll Width →

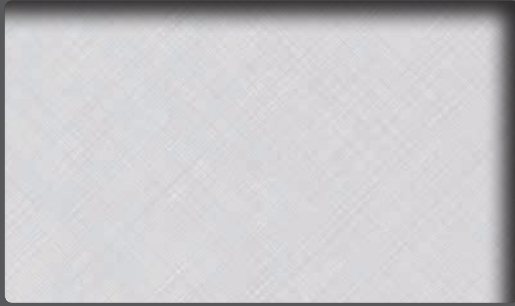
↑ Roll Length ↓



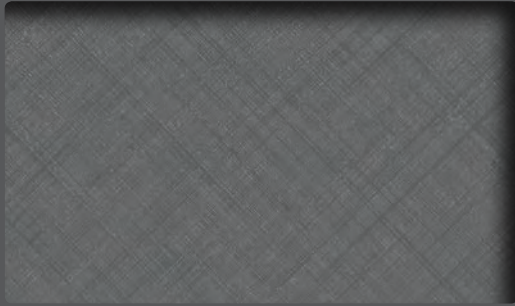
Cross Hairline Matte
SH2CHMA



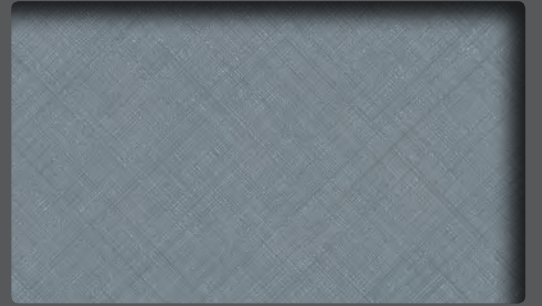
Cross Hairline Sucre
SH2CHSC



Cross Hairline Milky
SH2CHML



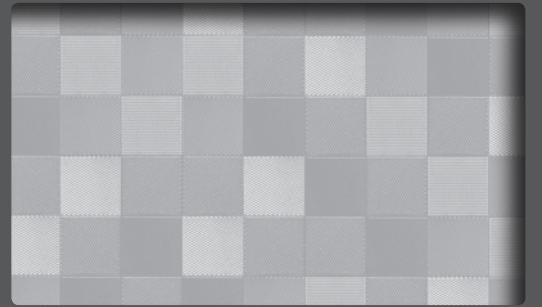
Cross Hairline Matte Light Gray
SH2CHMAL



Cross Hairline Matte Blue Gray
SH2CHMAB



Wave Matte
SH2LWMA



Mosaic Matte
SH2SMMA



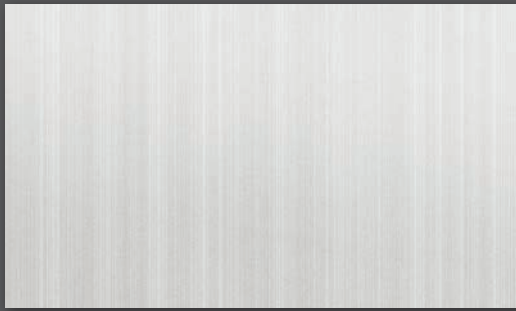
Hairline Matte
SH2HLMA

3M™ DI-NOC™ Glass Finishes



DG-1161 Abstract

3M™ DI-NOC™ Glass Finishes



DG-1716 Metallic Hairline



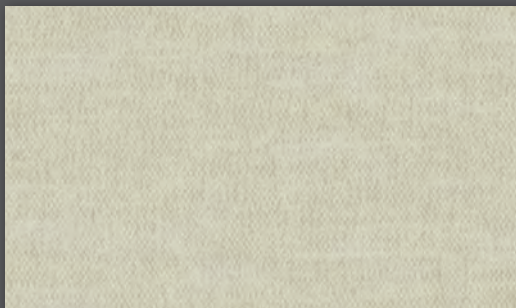
DG-379 Metallic Hairline



DG-432 Metallic



DG-1786 Textile



DG-1689 Textile Silk



DG-1156 Textile Silk



DG-1613 Textile Silk



DG-1129 Fine Wood



DG-1022 Fine Wood



DG-1751 Fine Wood

New Designs

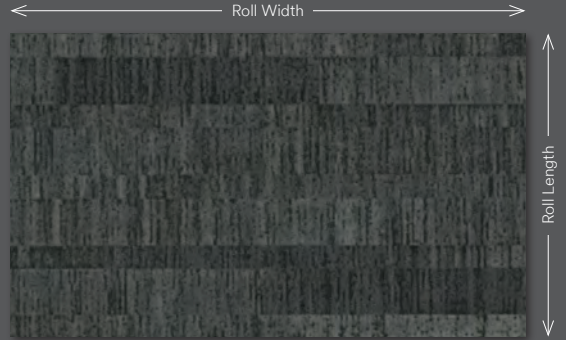
3M™ DI-NOC™ Glass Finishes



DG-1528 Abstract

New Designs

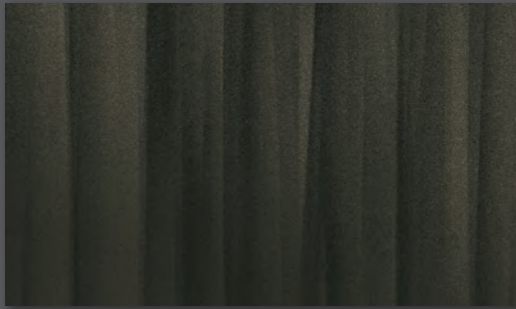
3M™ DI-NOC™ Glass Finishes



DG-1678 Abstract



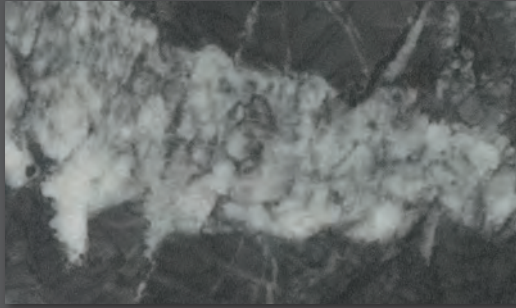
DG-1528 Abstract



DG-1161 Abstract



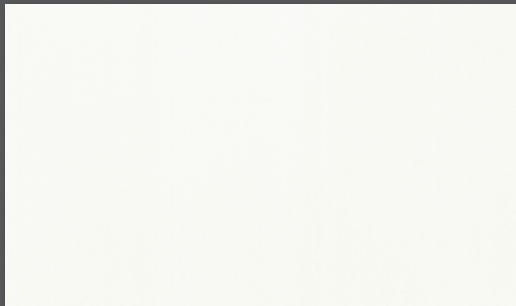
DG-1831 Stone



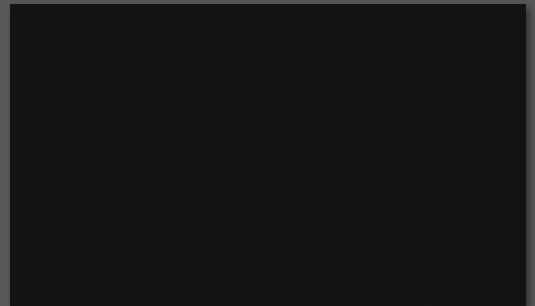
DG-1587 Stone



DG-1719 Mortar/Stucco



DG-503 Solid Color



DG-504 Solid Color

Frost/Matte



Matte Crystal 2
SH2MACRX2  Exterior



Matte Crystal-i
SH2MACR-I



Fine Crystal
SH2FNCR



Mare
SH2FGMR



Milky White
SH2MAML



Glace
SH2MAGL



Luce
SH2FGLU



Milky Crystal
SH2MLCRX  Exterior



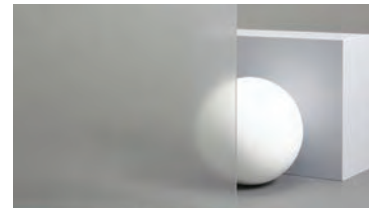
Milky Milky
SH2MAMM



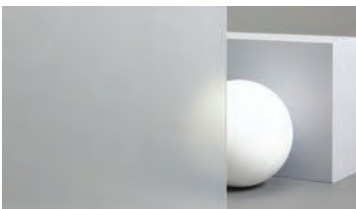
Lausanne
SH2EMLA



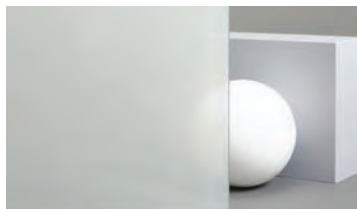
Oslo
SH2EMOS



Essen
SH2EMES



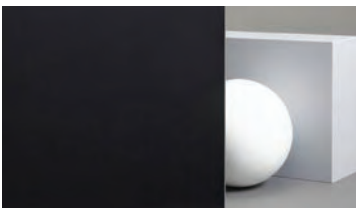
Chamonix
SH2EMCH



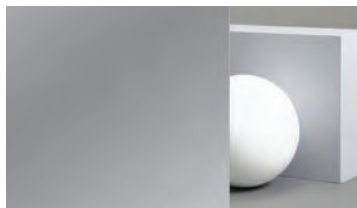
Cielo
SH2FGCE



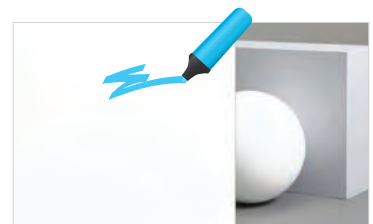
Opaque White
SH2MAOW



Opaque Black
SH2BKOP

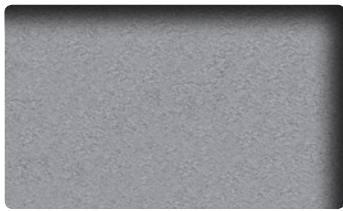


Reflect
RE1SIAR

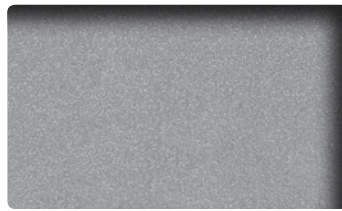


Whiteboard (dry erase)
WH-111-G

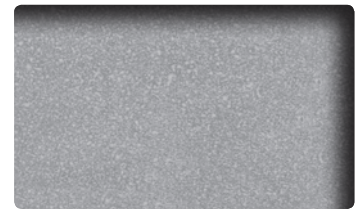
Frost/Matte



Matte Crystal 2
SH2MACRX2  Exterior



Matte Crystal-i
SH2MACR-I



Fine Crystal
SH2FNCR



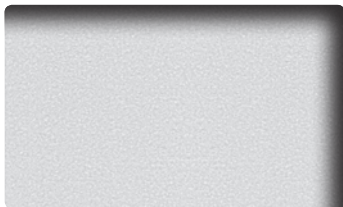
Mare
SH2FGMR



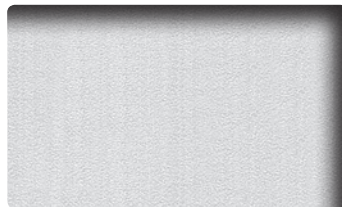
Milky White
SH2MAML



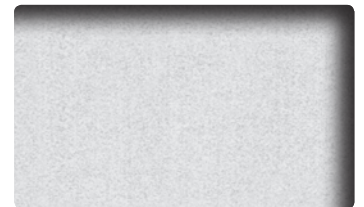
Glace
SH2MAGL



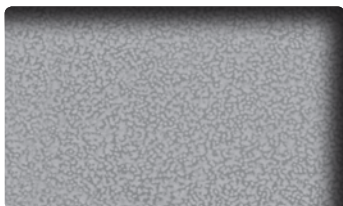
Luce
SH2FGLU



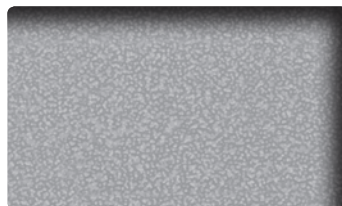
Milky Crystal
SH2MLCRX  Exterior



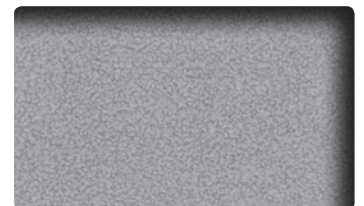
Milky Milky
SH2MAMM



Lausanne
SH2EMLA



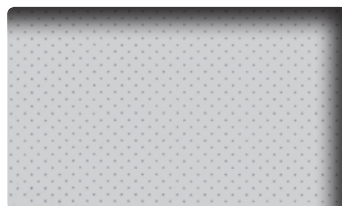
Oslo
SH2EMOS



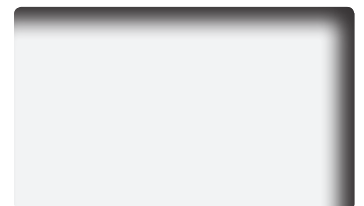
Essen
SH2EMES



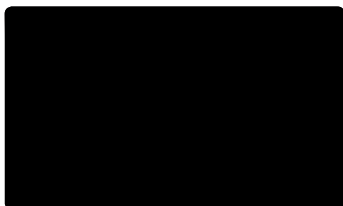
Chamonix
SH2EMCH



Cielo
SH2FGCE



Opaque White
SH2MAOW



Opaque Black
SH2BKOP



Reflect
RE1SIAR



Whiteboard (dry erase)
WH-111-G

Gradation



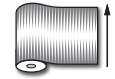
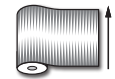
Cloud White SH2FGCL



Illumina Silky-W SH2SSIM-W

Gradation

Cloud Narrow White
SH2FGCN
Cloud White
SH2FGCL

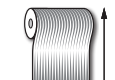
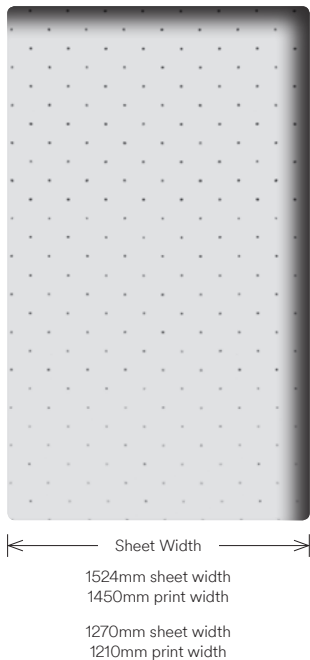


Cloud is a center gradation available in full rolls with the print direction across the roll. The gradation becomes transparent at both edges across the roll.

Cloud
Roll width: 1524mm with 240mm print width in center.

Cloud Narrow
Roll width: 1270mm with 100mm print width in center.

Illumina Silky-W
SH2SSIM-W
Illumina Silky-S
SH2SSIM-S



Illumina Silky-W and Illumina Silky-S are provided in single panel sheets with the print direction down the sheet length, wound on a small roll.

The printed area for Illumina Silky does not continue all the way to the width of the sheets.

Illumina Silky-W
A center gradation which becomes transparent at both ends of the sheet.
Sheet size: 2950mm x 1524mm
Printed area: 2400mm x 1450mm
Sheet size: 2950mm x 1270mm
Printed area: 2400mm x 1210mm

Illumina Silky-S
A single gradation that becomes transparent on one end of the sheet.
Sheet size: 1980mm x 1524mm
Printed area: 1900mm x 1450mm
Sheet size: 1980mm x 1270mm
Printed area: 1900mm x 1210mm

Gradation



Illumina Reflect

Illumina

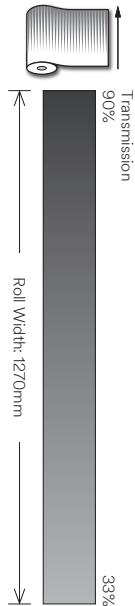
Illumina-g



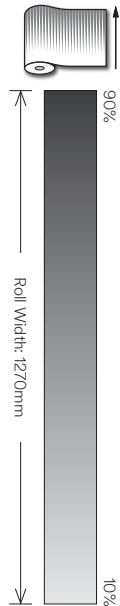
Illumina SH2FGIM

Gradation

Diamond Ghost Reflect
SH2SIDGR



Diamond Reflect
SH2SIDR



Illumina Reflect
SH2SIIM



+



Reflect
RE1SIAR

Transmission and color of Frost/Matte pattern compliments the Gradation pattern.

+



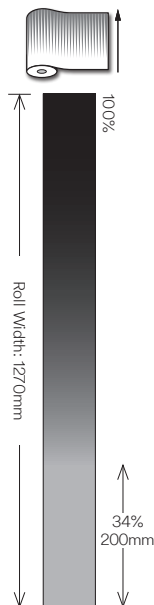
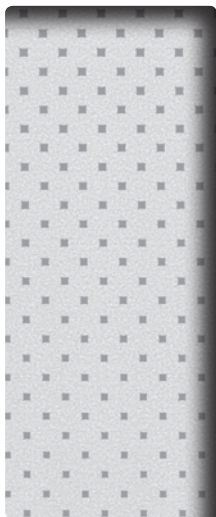
Reflect
RE1SIAR

+

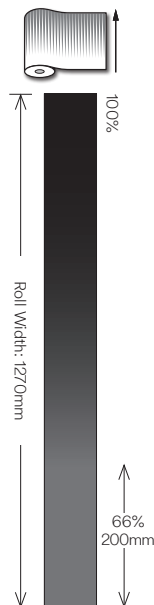
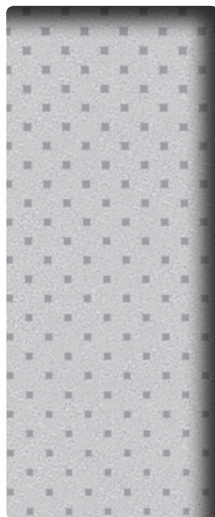


Reflect
RE1SIAR

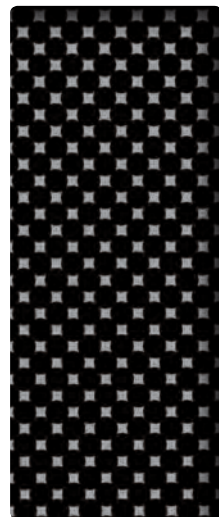
Illumina
SH2FGIM



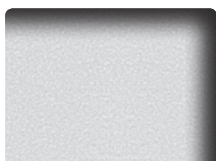
Illumina-g
SH2FGIM-G



Illumina Black
SH2BKIM



+



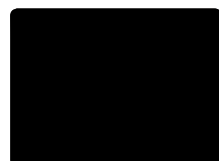
Luce
SH2FGLU

+



Glace
SH2MAGL

+



Opaque Black
SH2BKOP

Gradation



Illumina Black

Illumina Reflect

Illumina

Illumina-g

Aerina

Sabrina

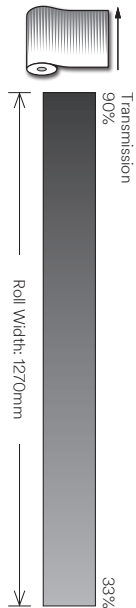
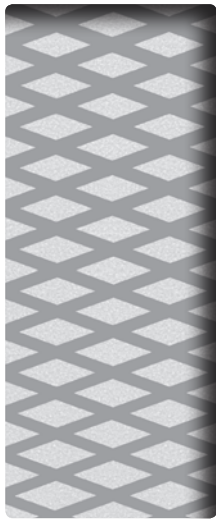
Lontano

Tsurugi

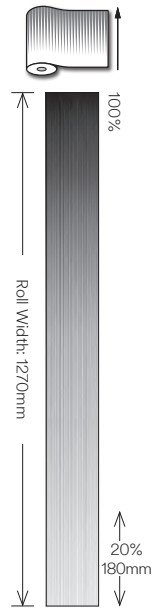
Venetian

Gradation

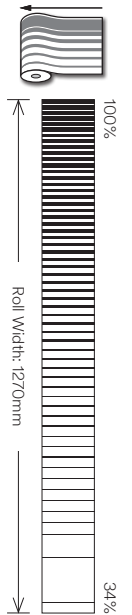
Diamond
SH2FGDM



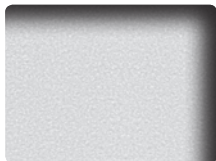
Tsurugi
SH2FGTG



Venetian
SH2FGVN



+



Transmission and color of Frost/Matte pattern compliments the Gradation pattern.

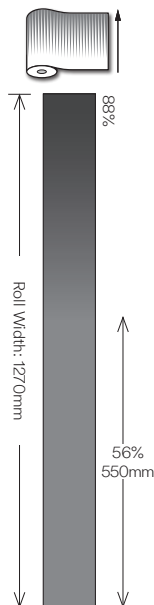
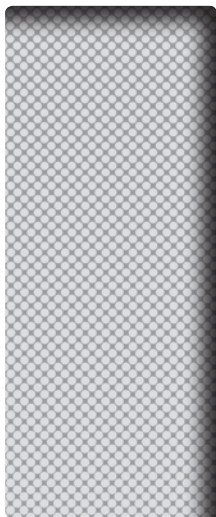
Luce
SH2FGLU

+

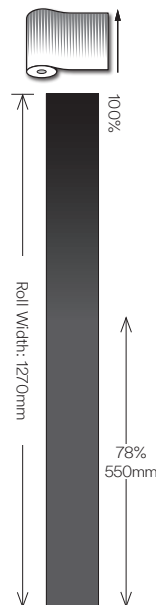


Luce
SH2FGLU

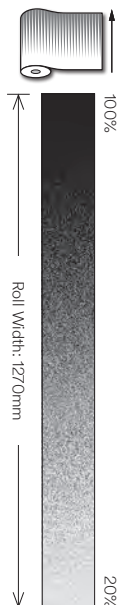
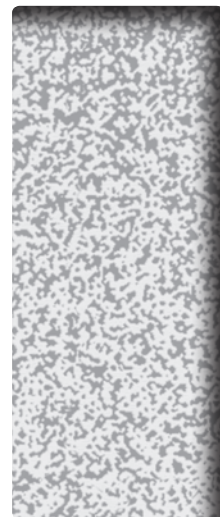
Aerina
SH2FGAR



Sabrina
SH2FGSB



Lontano
SH2FGLO



+



Cielo
SH2FGCE

+



Mare
SH2FGMR

Natural/Washi



Vega SH2FGVG

Natural/Washi

← Roll Width →

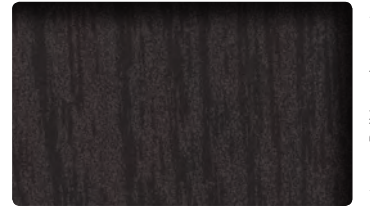
↑ Roll Length ↓



Pyrgos
SH2PTPG



Frost Walnut
SH2PTFW



Frost Walnut Smoke
SH2PTFWS



Rikyu
SH2PTRK



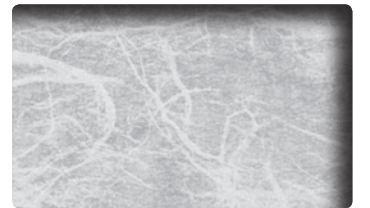
Straight Washi
SH2FGSW



Sagano
SH2PTSA2



Yamato
SH2PTYA



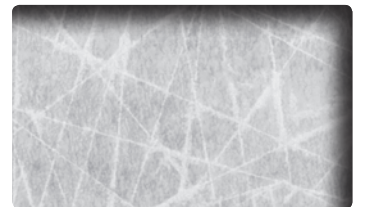
Altair
SH2FGAT



Grain Silver
SH2CSGS



Grain Champagne Gold
SH2CSGC



Vega
SH2FGVG

Fabric



Buckram Pearl + Gray SH2FGBUG

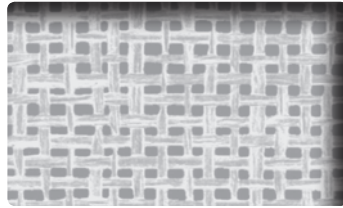
Fabric

← Roll Width →

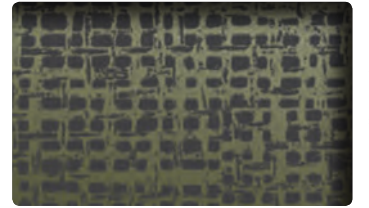
↑ Roll Length ↓



Linen Crystal
SH2LNCR



Burlap
SH2FGBL



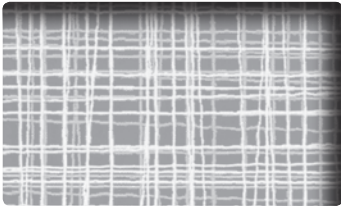
Burlap Champagne Gold
SH2CSBLC



Canvas
SH2FGCV



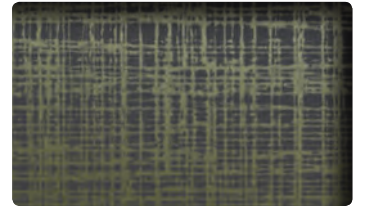
Canvas Champagne Gold
SH2CSVC



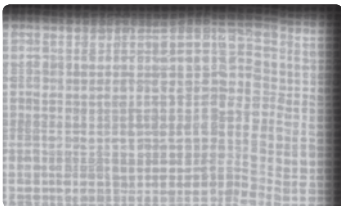
Linen
SH2FGLN



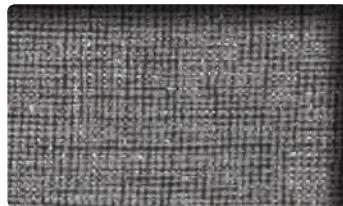
Sensai Linen
SH2FGSE



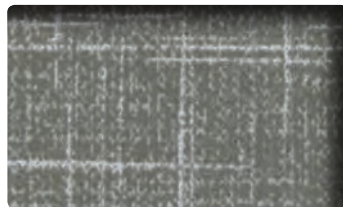
Sensai Linen Champagne Gold
SH2CSSEC



Buckram
SH2FGBU



Buckram Pearl + Gray
SH2FGBUG

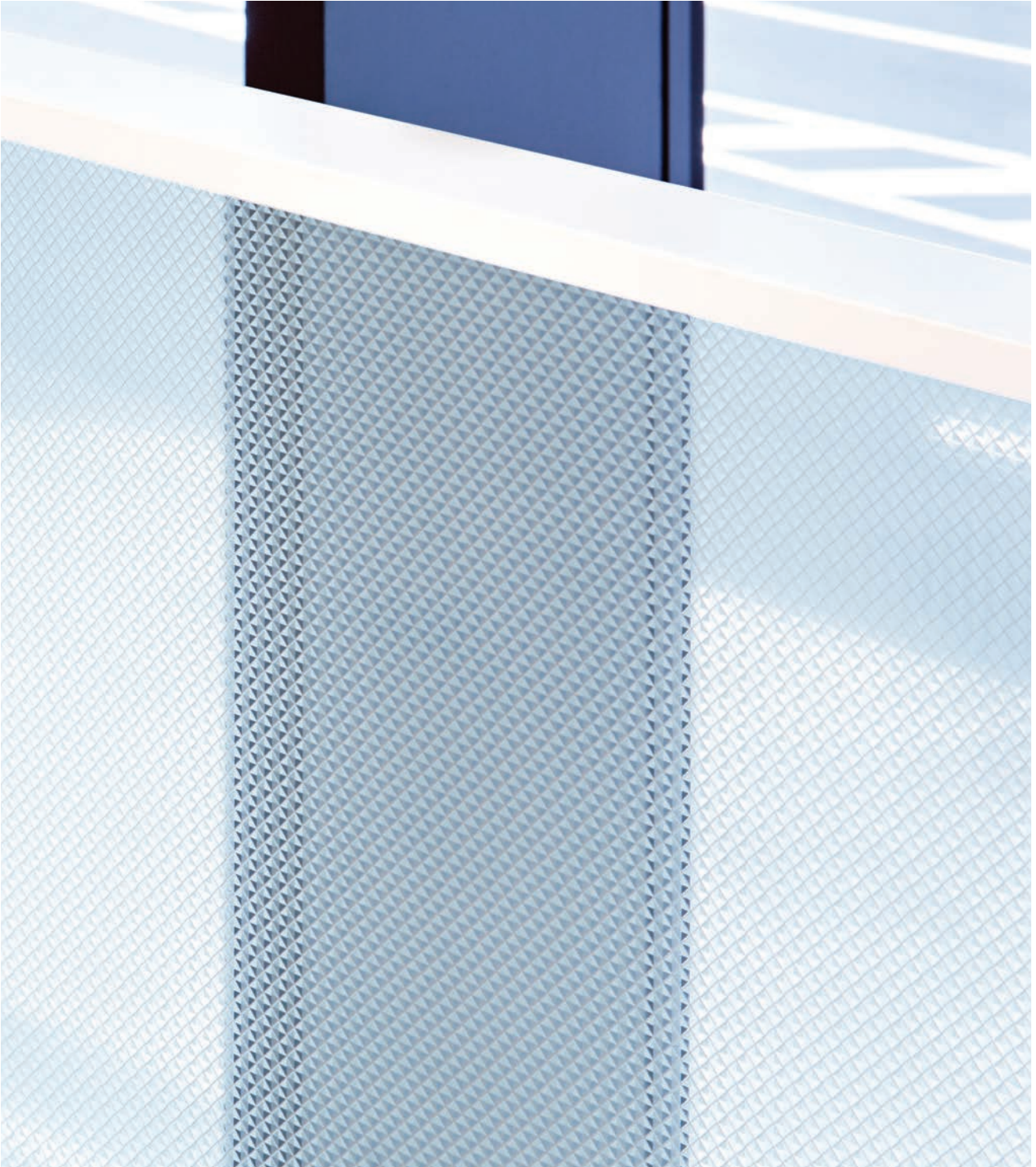


Weave Pearl + Dark Gray
SH2EMWG



Weave Pearl
SH2EMWP

Geometric



Cut Glass Pearl SH2CSCP

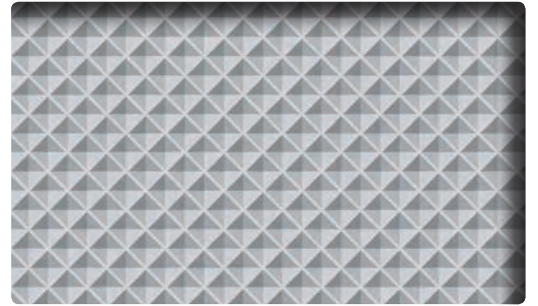
Geometric

← Roll Width →

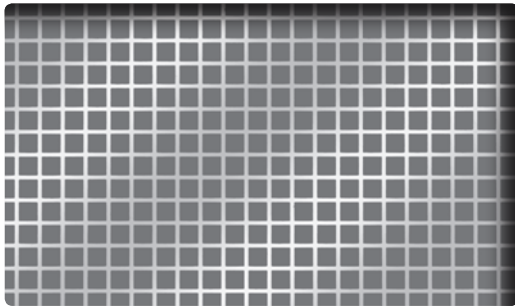
↑ Roll Length ↓



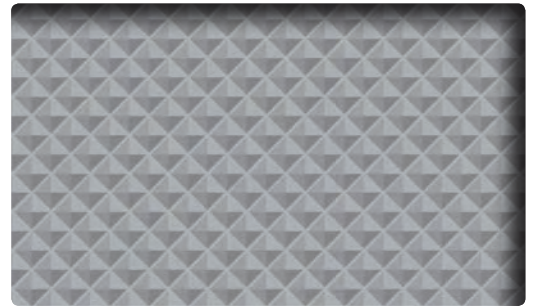
Grid
SH2FGGD



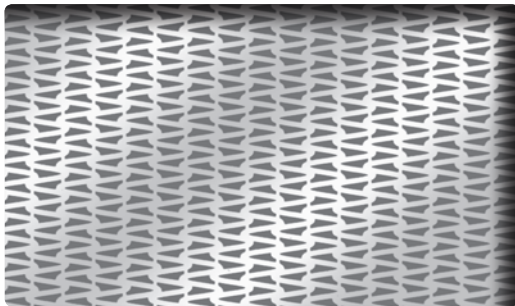
Cut Glass
SH2CSC



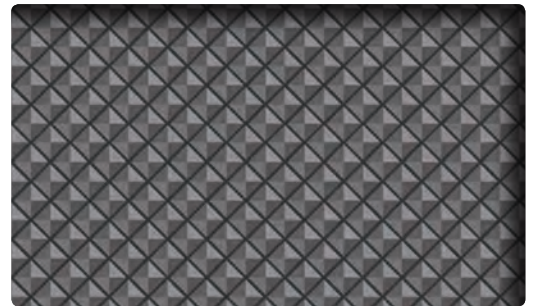
Grid Reflect
SH2SIGDR



Cut Glass Pearl
SH2CSCP



Chain Mesh Reflect
SH2SICMR



Cut Glass Silver
SH2CSCS

Stripe



String SH2PTST

Stripe

← Roll Width →

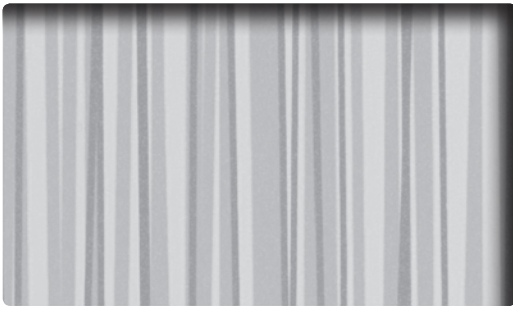
↑ Roll Length ↓



Fusion Pearl
SH2CSFP



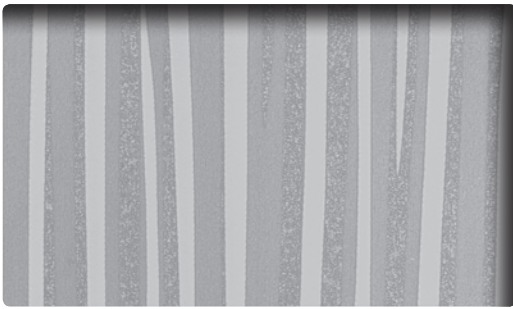
String
SH2PTST



Wind
SH2PTWD



String Reverse
SH2PTSTR



Safari
SH2PTSR



Fine String
SH2PTFS

Stripe



Shutie Black SH2BKST

Stripe

← Roll Width →

↑ Roll Length ↓



Arpa
SH2FGAP



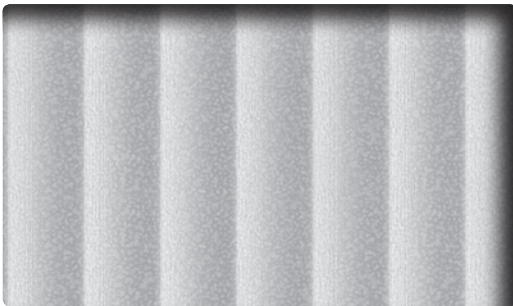
Arpa Crystal
SH2APCR



Arpa Black
SH2BKAP



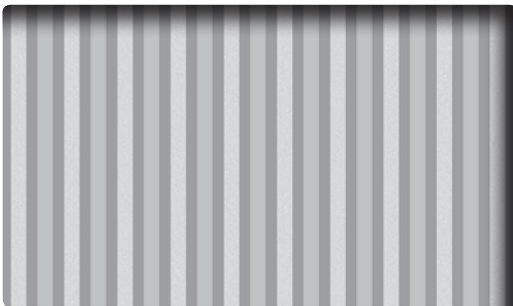
Fine
SH2FGFN



Seattle
SH2DGST



Seattle Fine
SH2DGST-F



Shutie
SH2FGST



Shutie Black
SH2BKST

Stripe/Border

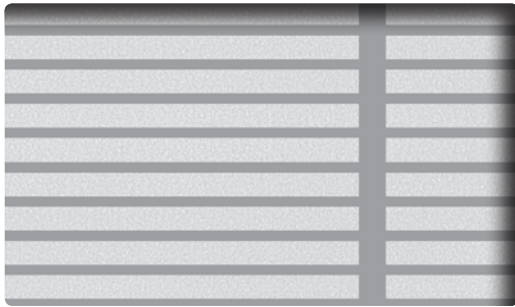


Leise SH2FGLS

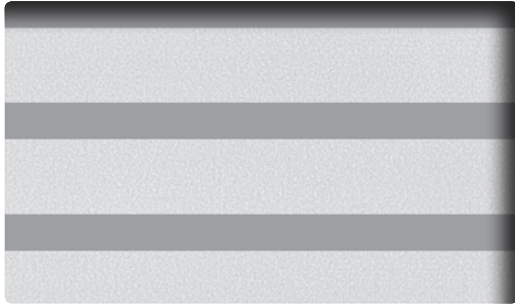
Stripe/Border



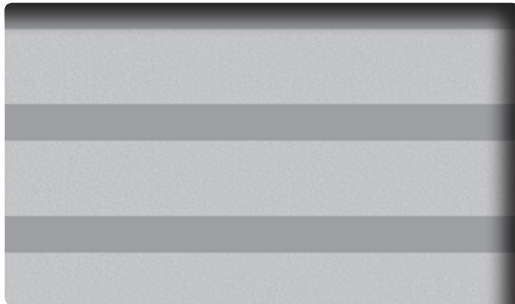
Leise
SH2FGLS



Paracell
SH2FGPR

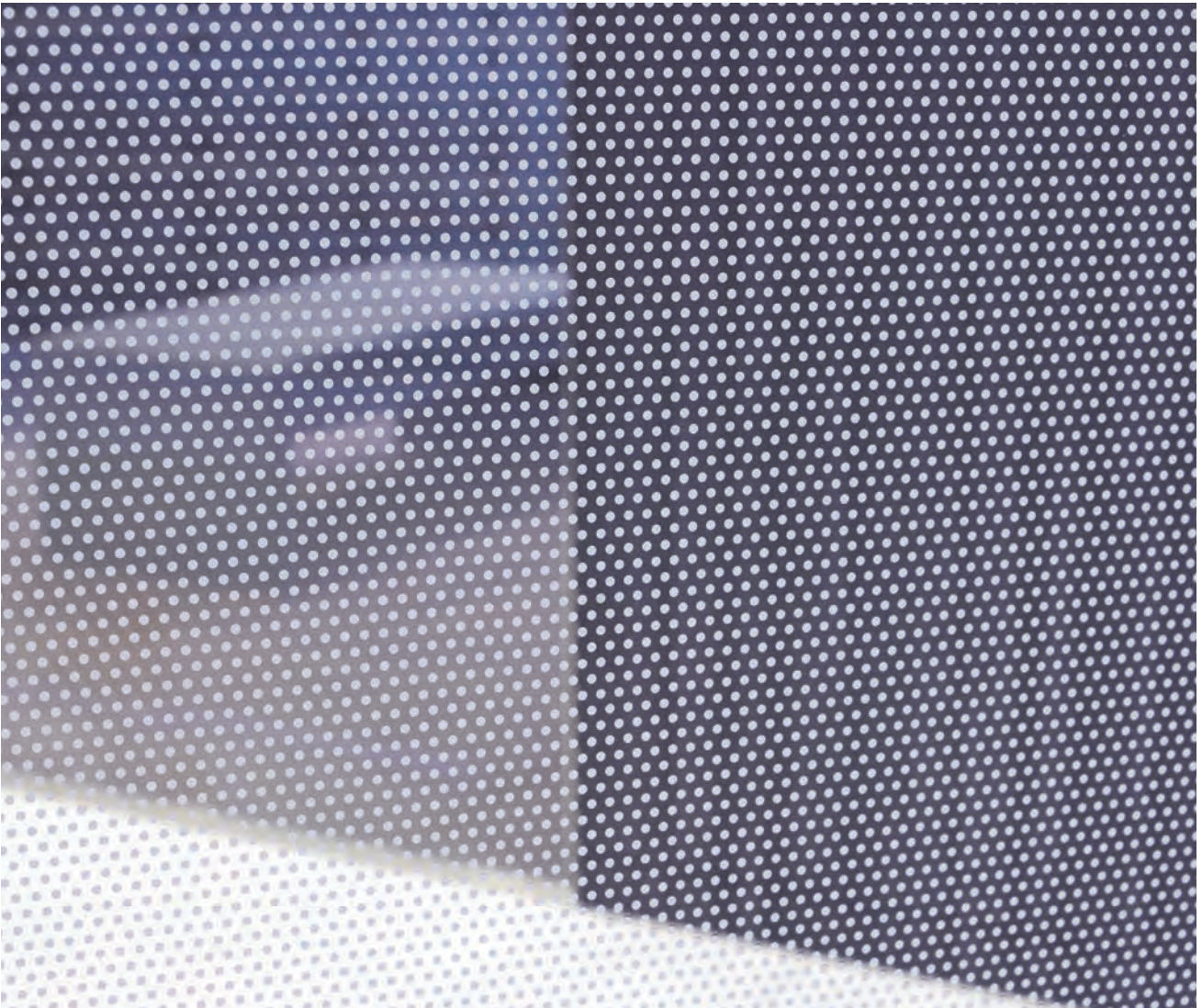


Slat
SH2FGSL



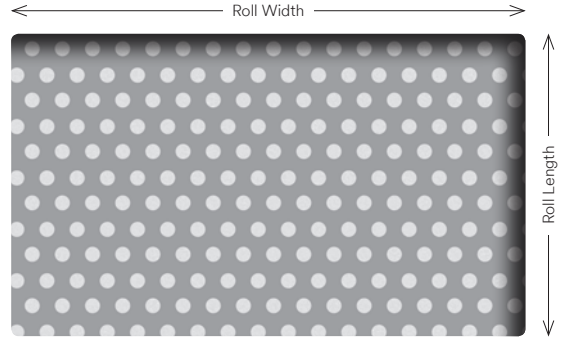
Slat-g
SH2FGSL-G

Dot

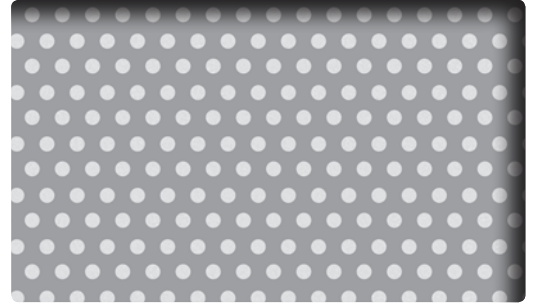


Vista SH2FGVI

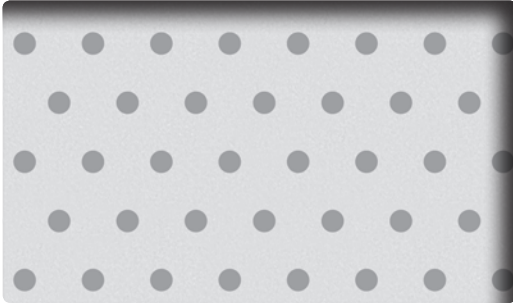
Dot



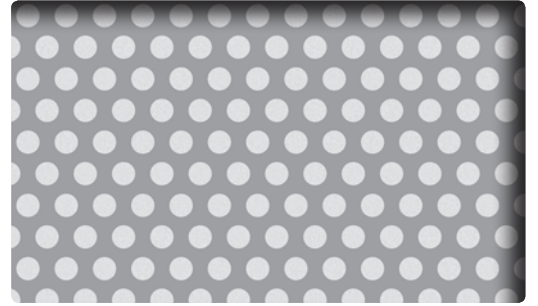
Aura 9
SH2PCA9



Vista
SH2FGVI



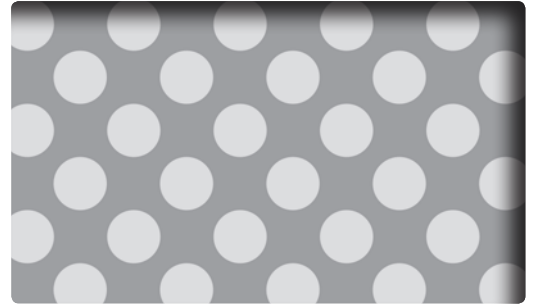
Luna 9
SH2PCL9



Shizuku
SH2FGSK



Luna 6
SH2PCL6



Kanon
SH2FGKN

CRYSTAL Dusted and Frosted



This custom-cut design was created using 3M™ CRYSTAL Dusted White pattern.



DICHROIC DF-PA Chill

CRYSTAL Dusted and Frosted



Dusted White
7725SE-314  Exterior




Frosted White
7725SE-324  Exterior



Frosted Gold
7725SE-331  Exterior

DICHROIC

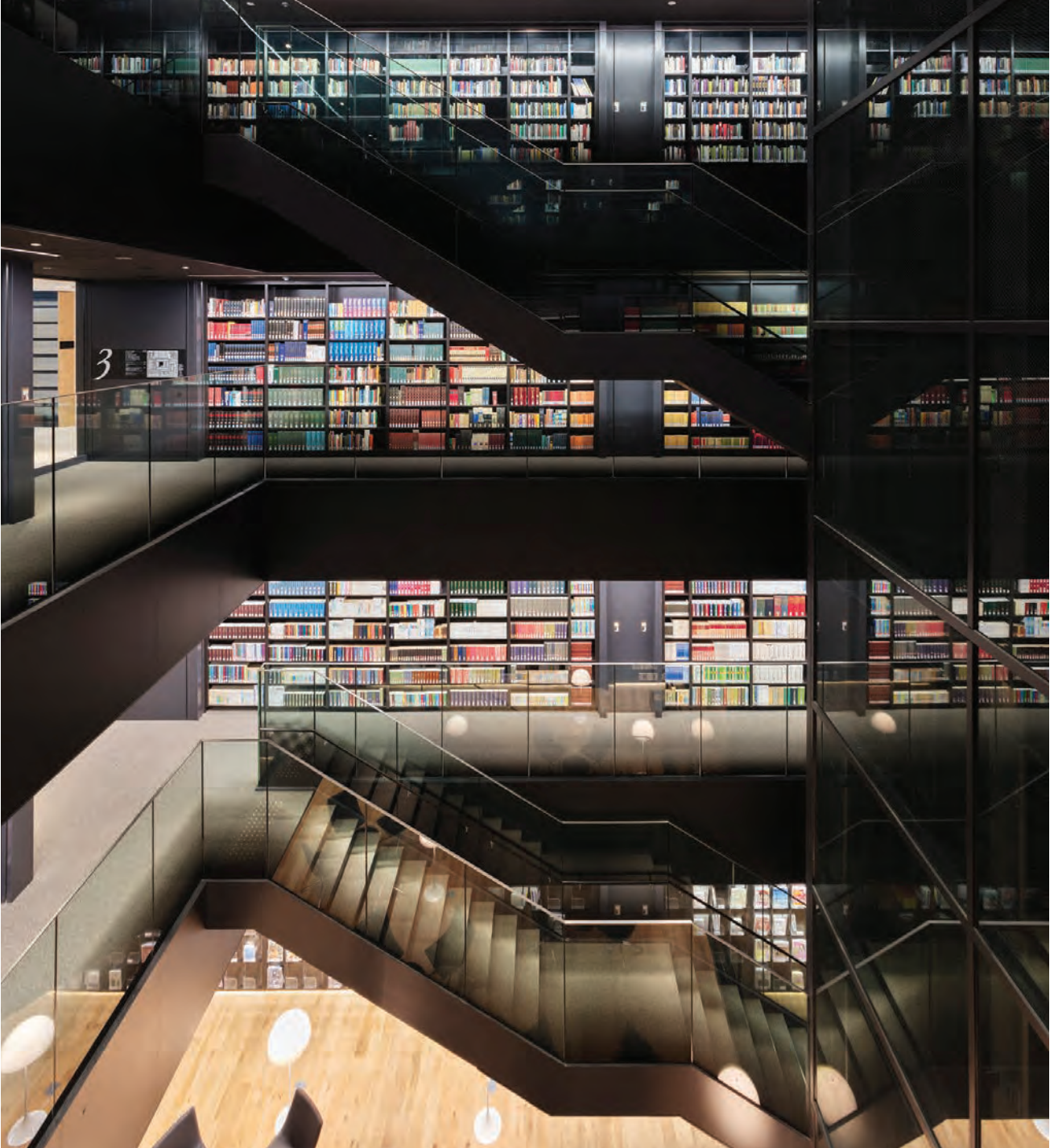


Blaze
DF-PA Blaze  Exterior



Chill
DF-PA Chill  Exterior

Explore the possibilities with 3M™ Glass Finishes.



Illumina Black SH2BKIM



3M Commercial Solutions
3M Center, Building 220-12E-04
St. Paul, MN 55144-1000

Phone 888-650-3497
Web 3M.com/AMD

Ver. 1

3M, DI-NOC and FASARA are trademarks of 3M. All other trademarks are property of their respective owners. Please recycle.
© 3M 2019. All rights reserved.

DIGITAL
98-0406-0167-0
JR-9710-5877-1
FAS-201-A